

BOX SCORE: *** FINAL ***

Date: 03-19-88 Site: State Tourney, Louisville Attendance: 18,636

Team: Pleasure Ridge Park

NO.	NAME	TOTAL FG		3-POINT		FT	FTA	REB			PF	TP	A	TO	BLK	S	MIN
		FG	FGA	FG	FGA			O	D	T							
21	Lewis, Kevin	0 / 0	0 / 0	0 / 0	0 / 0	0	0	0	0	0	2	0	0	0	0	0	5
33	Hammonds, Sean	6 / 9	0 / 0	0 / 0	0 / 0	0	0	5	5	10	4	12	0	2	0	1	28
34	Webster, Chas	7 / 11	0 / 0	0 / 0	0 / 0	3	6	7	3	10	3	17	1	0	0	0	29
15	Woods, Mark	9 / 20	3 / 6	3 / 6	0 / 0	0	0	2	4	6	2	21	11	6	0	2	32
12	Perick, Andy	8 / 17	4 / 7	4 / 7	0 / 0	3	5	1	2	3	2	23	2	2	0	0	29
23	Ricketts, Wayne	5 / 11	1 / 2	1 / 2	0 / 0	0	0	0	0	0	2	11	4	0	0	0	24
10	Pfaadt, Shawn	0 / 1	0 / 0	0 / 0	0 / 0	0	0	0	0	0	0	0	1	0	0	0	3
24	Spalding, T.	2 / 2	0 / 0	0 / 0	0 / 0	2	2	2	3	5	3	6	1	0	0	1	10
TEAM		37 / 71		8 / 15		8	13	18	17	35	18	90	20	10	0	4	160
Percentages:		Game-----		FG		37/ 71	52.1%	3-PT.		8/ 15	53.3%	FT		8/ 13	61.5%		
		Period 1		9/ 15		60.0%	3/ 5		60.0%	0/ 0		0.0%					
		Period 2		10/ 19		52.6%	0/ 1		0.0%	0/ 1		0.0%					
		Period 3		9/ 15		60.0%	2/ 2		100.0%	4/ 7		57.1%					
		Period 4		9/ 22		40.9%	3/ 7		42.9%	4/ 5		80.0%					

Team: Clay County

NO.	NAME	TOTAL FG		3-POINT		FT	FTA	REB			PF	TP	A	TO	BLK	S	MIN
		FG	FGA	FG	FGA			O	D	T							
20	Jackson, Kevin	4 / 8	0 / 0	0 / 0	0 / 0	2	2	4	0	4	4	10	2	2	0	2	27
22	Farmer, Russ	6 / 15	4 / 13	4 / 13	0 / 0	5	7	3	7	10	0	21	3	2	0	0	32
54	Rawlings, E.	3 / 3	0 / 0	0 / 0	0 / 0	0	0	3	6	9	4	6	0	1	0	0	32
10	Chadwell, Russ	13 / 17	0 / 0	0 / 0	0 / 0	8	8	3	2	5	5	34	1	0	0	0	30
32	Farmer, Richie	7 / 18	1 / 3	1 / 3	0 / 0	3	4	0	2	2	1	18	11	5	0	0	32
30	Gilbert, A.	1 / 2	0 / 0	0 / 0	0 / 0	1	3	2	0	2	0	3	0	0	0	0	7
TEAM		34 / 63		5 / 16		19	24	15	18	33	14	92	17	10	0	2	160
Percentages:		Game-----		FG		34/ 63	54.0%	3-PT.		5/ 16	31.3%	FT		19/ 24	79.2%		
		Period 1		11/ 19		57.9%	2/ 5		40.0%	0/ 0		0.0%					
		Period 2		7/ 15		46.7%	2/ 6		33.3%	4/ 5		80.0%					
		Period 3		11/ 20		55.0%	1/ 4		25.0%	3/ 4		75.0%					
		Period 4		5/ 9		55.6%	0/ 1		0.0%	12/ 15		80.0%					

OFFICIALS: Mike Carter, Rick Chasteen, Alt. - R. Curry

SCORE BY PERIODS

Technical: None

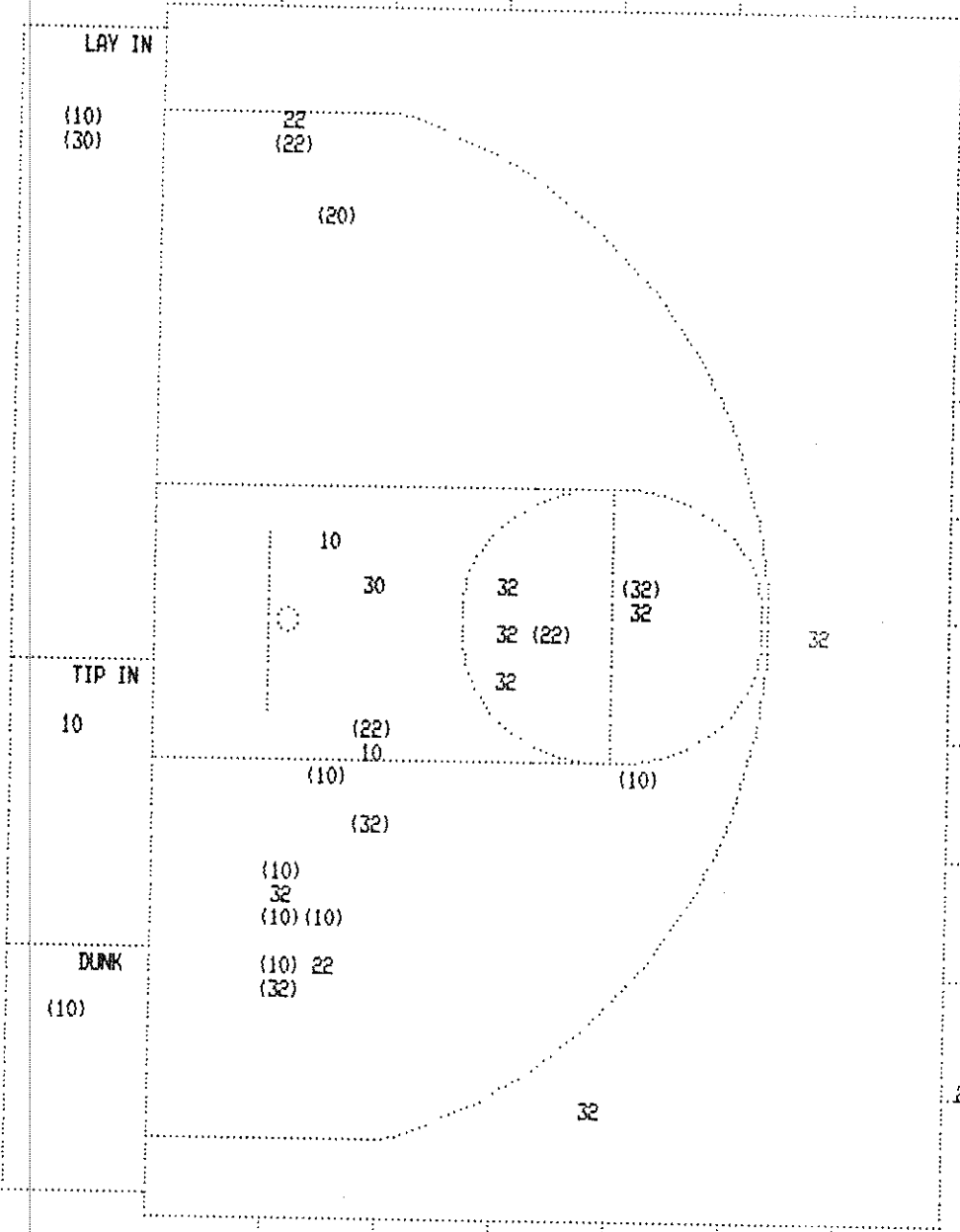
Pleasure Ridge Park	21	20	24	25	=	90
Clay County	24	20	26	22	=	92

Produced by the K.H.S.A.A. Stat Crew with FINAL III**

Player	Team	Clay County	Time	Score	Pleasure Ridge Park	Player	Team
3	8	Player Control Foul Farmer, Richie	4 4:11				
			4 4:03		3 pt 22 ft Left Angle Jump shot by Woods, Mark, missed	7-18	38.8% 33-63 52.3%
D-2 Tot-3	D-4 Tot-29	Rebound by Farmer, Russ	4 4:01				
			4 4:01		Foul on Webster, Chas	3	9
1-3 33.3%	13-18 72.2%	Farmer, Russ, 1 & Bonus missed 1st	4 4:01			D-1 Tot-2	D-3 Tot-31
			4 4:01		Rebound by Webster, Chas		
			4 3:51	84-81*	3 pt 23 ft Right Angle Jump shot by Penick, Andy, made Assist by Woods, Mark	8-16	50.0% 34-64 53.1%
			4 3:38		Steal by Woods, Mark	11	19
4	9	Bad Pass by Farmer, Richie	4 3:38			1	3
4	8	Foul on Rawlings, E.	4 3:38				
		Sub In: Jackson, Kevin Out: Gilbert, A.	4 3:38				
D-2 Tot-2	D-5 Tot-30	Rebound by Rawlings, E.	4 3:38		Webster, Chas, 1 & Bonus missed 1st	1-4	25.0% 6-11 54.5%
13-16 81.2%	34-60 56.6%	12 ft Left Base Line Jump shot by Chadwell, Russ, made	4 3:37				
2	17	Assist by Jackson, Kevin	4 3:23	*86-81			
			4 3:14		3 pt 22 ft Straight Away Jump shot by Penick, Andy, missed	8-17	47.0% 34-65 52.3%
D-3 Tot-4	D-6 Tot-31	Rebound by Farmer, Russ	4 3:11				
			4 2:47		Steal by Spalding, T.	1	4
5	10	Bad Pass by Farmer, Richie	4 2:46				
			4 2:44	86-83*	Layup Off Fast Break by Woods, Mark, made Assist by Spalding, T.	8-19	42.1% 35-66 53.0%
6-15 40.0%	34-61 55.7%	3 pt 14 ft Left Base Line Jump shot by Farmer, Russ, missed	4 2:30			1	20
D-1 Tot-1	D-2 Tot-32	Rebound by Chadwell, Russ	4 2:26				
13-17 76.4%	34-62 54.8%	4 ft Lane Follow by Chadwell, Russ, missed	4 2:26				
			4 2:23		Rebound by Spalding, T.	D-1 Tot-2	D-4 Tot-32
			4 2:14		12 ft Left Base Line Jump shot by Ricketts, Wayne, missed	5-9	55.5% 35-67 52.2%
			4 2:11		Rebound by Webster, Chas	0-2 Tot-3	0-6 Tot-33
			4 1:57	86-85*	Follow Layup by Webster, Chas, made	7-11	63.6% 36-68 52.9%
		REB: 32 A: 17 BLK: 0 TD: 10 PF: 8	4 1:57				
		S: 2 FT: 13-18 72.2% FG: 34-62 54.8%		No. 1 Clay County	T I M E - O U T	REB: 33 A: 20 BLK: 0 TD: 9 PF: 9	
						S: 4 FT: 6-11 54.5% FG: 36-68 52.9%	
7-18 38.8%	34-63 53.9%	8 ft Lane Jump shot by Farmer, Richie, missed	4 1:47				
			4 1:46		Rebound by Spalding, T.	D-2 Tot-3	D-5 Tot-34
			4 1:42		Layup Off Fast Break by Ricketts, Wayne, missed	5-10	50.0% 36-69 52.1%
D-4 Tot-5	D-7 Tot-33	Rebound by Farmer, Russ	4 1:34				
			4 1:32		Foul on Spalding, T.	3	10
3-5 60.0%	15-20 75.0%	Farmer, Russ, 2 Free Throws made both	4 1:28	*88-85			
5	9	Foul on Chadwell, Russ	4 1:26				
		Sub In: Gilbert, A. Out: Chadwell, Russ	4 1:24				
			4 1:24	88-87*	Webster, Chas, 1 & Bonus made both	3-6	50.0% 8-13 61.5%
			4 0:15		Foul on Ricketts, Wayne	2	11
		REB: 33 A: 17 BLK: 0 TD: 10 PF: 9	4 0:15				
		S: 2 FT: 15-20 75.0% FG: 34-63 53.9%		Pleasure Ridge Park No. 2	T I M E - O U T	REB: 34 A: 20 BLK: 0 TD: 9 PF: 11	
						S: 4 FT: 8-13 61.5% FG: 36-69 52.1%	
5-7 71.4%	17-22 77.2%	Farmer, Russ, 1 & Bonus made both	4 0:15	*90-87			
			4 0:09		3 pt 22 ft Right Side Jump shot by Ricketts, Wayne, missed	5-11	45.4% 36-70 51.4%
			4 0:07		Rebound by TEAM	0-1 Tot-1	0-7 Tot-35
		REB: 33 A: 17 BLK: 0 TD: 10 PF: 9	4 0:07				
		S: 2 FT: 17-22 77.2% FG: 34-63 53.9%		Pleasure Ridge Park No. 3	T I M E - O U T	REB: 35 A: 20 BLK: 0 TD: 9 PF: 11	
						S: 4 FT: 8-13 61.5% FG: 36-70 51.4%	
			4 0:07		Sub In: Lewis, Kevin Out: Ricketts, Wayne	2	10
			4 0:07		Bad Pass by Penick, Andy	2	12
			4 0:05		Foul on Lewis, Kevin		
			4 0:05	*92-87			
2-2 100%	19-24 79.1%	Jackson, Kevin, 1 & Bonus made both	4 0:01	92-90*	3 pt 21 ft Right Angle Jump shot by Woods, Mark, made	9-20	45.0% 37-71 52.1%

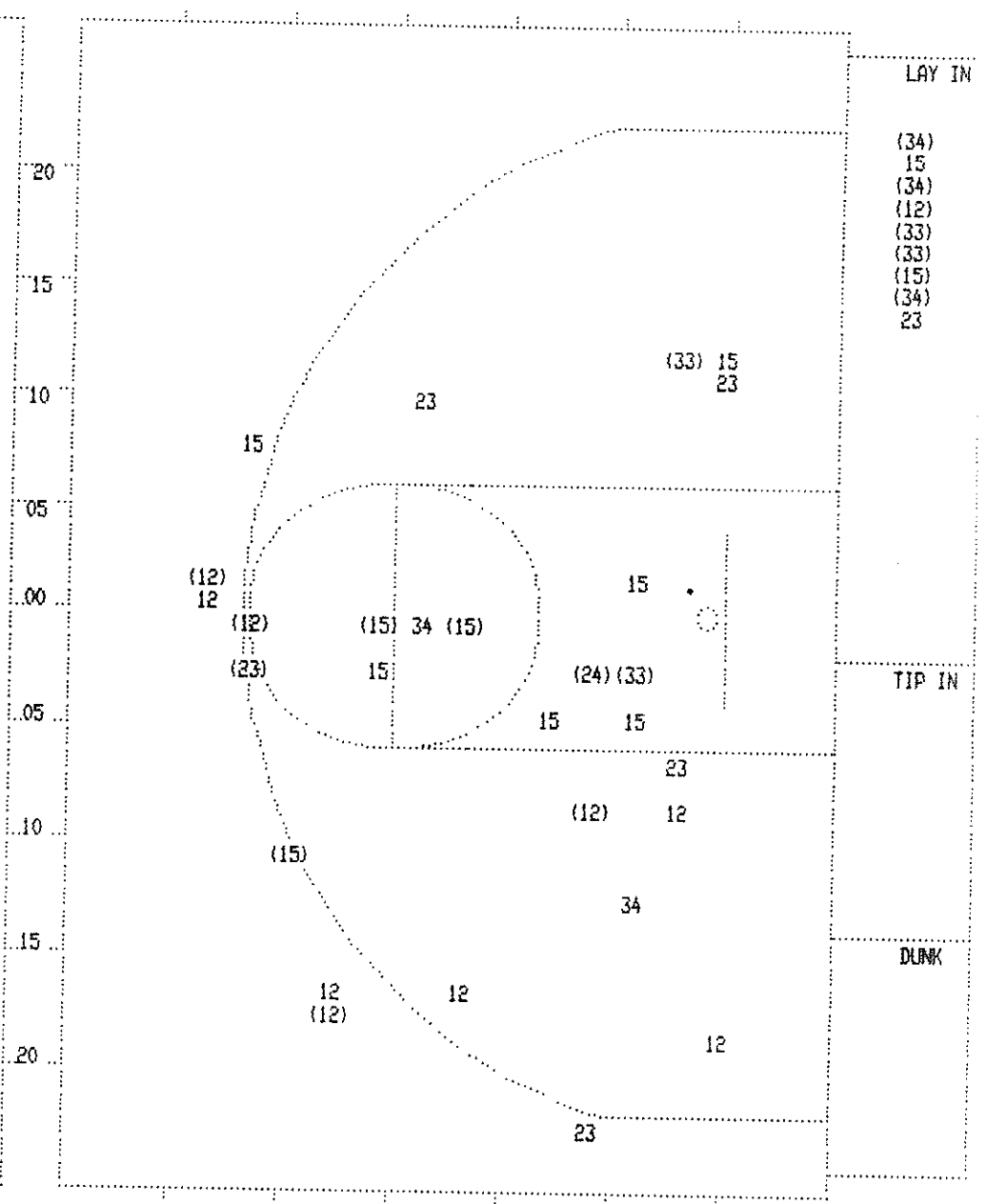
Player	Team	Clay County	Time	Score	Pleasure Ridge Park	Player	Team
Jackson, Kevin	Farmer	Russ, Rawlings, E., Chadwell, Russ, Farmer, Richie			Lewis, Kevin, Hammonds, Sean, Webster, Chas, Woods, Mark, Penick, Andy		
			4 7:45		Ball to Panthers		
			4 7:42		14 ft Lane Jump shot by Woods, Mark, missed	7-15 46.6%	28-50 56.0%
			4 7:42		Rebound by Webster, Chas	0-1 Tot-1	0-1 Tot-24
			4 7:40		12 ft Lane Jump shot by Webster, Chas, missed	6-10 60.0%	28-51 54.9%
D-1 Tot-1	D-1 Tot-25	Rebound by Farmer, Richie	4 7:31				
6-16 37.5%	29-55 52.7%	14 ft Lane Jump shot by Farmer, Richie, missed	4 7:30		Rebound by Woods, Mark	D-1 Tot-1	D-1 Tot-25
			4 7:27	70-67*	Layup Off Fast Break by Penick, Andy, made	6-12 50.0%	29-52 55.7%
					Assist by Woods, Mark	9	17
		Sub In: Gilbert, A. Out: Jackson, Kevin	4 7:11				
1-2 50.0%	30-56 53.5%	Driving Layup by Gilbert, A., made	4 7:11	*72-67			
10	15	Assist by Farmer, Richie					
			4 7:11		Foul on Penick, Andy	2	4
			4 7:11		Sub In: Ricketts, Wayne Out: Lewis, Kevin		
			4 7:11				
1-3 33.3%	7-10 70.0%	Gilbert, A., 1 Free Throw missed	4 7:08				
0-1 Tot-1	0-1 Tot-26	Rebound by Farmer, Russ	4 7:06	*74-67			
6-14 42.8%	31-57 54.3%	4 ft Lane Turnaround by Farmer, Russ, made	4 6:50		8 ft Right Base Line Jump shot by Penick, Andy, missed	6-13 46.1%	29-53 54.7%
D-1 Tot-1	D-2 Tot-27	Rebound by Rawlings, E.	4 6:47				
12-15 80.0%	32-58 55.1%	14 ft Left Base Line Jump shot by Chadwell, Russ, made	4 6:36	*76-67			
		Assist by Farmer, Richie					
11	16	Foul on Chadwell, Russ	4 6:18				
4	6		4 6:18		Sub In: Spalding, T. Out: Webster, Chas		
			4 6:18	76-69*	Penick, Andy, 1 & Bonus made both	3-5 60.0%	6-10 60.0%
			4 6:14		Steal by Hammonds, Sean	1	2
			4 6:13				
2	7	Bad Pass by Farmer, Richie	4 6:10		6 ft Lane Jump shot by Ricketts, Wayne, missed	5-7 71.4%	29-54 53.7%
			4 6:08		Rebound by Hammonds, Sean	0-1 Tot-1	0-2 Tot-26
			4 6:08	76-71*	Follow Layup by Hammonds, Sean, made	5-8 62.5%	30-55 54.5%
			4 6:06		Foul on Hammonds, Sean	3	5
1-2 50.0%	7-11 63.6%	Farmer, Richie, 1 & Bonus missed 1st	4 6:06				
			4 6:04		Rebound by Hammonds, Sean	D-1 Tot-2	D-2 Tot-27
			4 6:02		Bad Pass by Hammonds, Sean	2	9
7-17 41.1%	33-59 55.9%	14 ft Left Base Line Jump shot by Farmer, Richie, made	4 5:52	*78-71			
			4 5:44	78-74*	3 pt 22 ft Straight Away Jump shot by Penick, Andy, made	7-14 50.0%	31-56 55.3%
					Assist by Woods, Mark	10	18
			4 5:35		Foul on Woods, Mark	2	6
6-6 100%	9-13 69.2%	Chadwell, Russ, 2 Free Throws made both	4 5:35	*80-74			
			4 5:22		16 ft Left Angle Jump shot by Ricketts, Wayne, missed	5-8 62.5%	31-57 54.3%
D-1 Tot-2	D-3 Tot-28	Rebound by Farmer, Russ	4 5:21				
			4 5:10		Foul on Ricketts, Wayne	1	7
3-4 75.0%	11-15 73.3%	Farmer, Richie, 1 & Bonus made both	4 5:10	*82-74			
			4 5:01		7 ft Lane Jump shot by Woods, Mark, missed	7-16 43.7%	31-58 53.4%
			4 4:58		Rebound by Woods, Mark	0-1 Tot-2	0-3 Tot-28
			4 4:58		4 ft Lane Follow by Woods, Mark, missed	7-17 41.1%	31-59 52.5%
			4 4:56		Rebound by Hammonds, Sean	0-2 Tot-3	0-4 Tot-29
			4 4:56	82-76*	Follow Layup by Hammonds, Sean, made	6-9 66.6%	32-60 53.3%
			4 4:45		Foul on Hammonds, Sean	4	8
8-8 100%	13-17 76.4%	Chadwell, Russ, 2 Free Throws made both	4 4:45	*84-76			
			4 4:45		Sub In: Webster, Chas Out: Hammonds, Sean		
			4 4:36		3 pt 23 ft Right Angle Jump shot by Penick, Andy, missed	7-15 46.6%	32-61 52.4%
			4 4:32		Rebound by Spalding, T.	0-1 Tot-1	0-5 Tot-30
			4 4:32	84-78*	4 ft Lane Follow by Spalding, T., made	2-2 100%	33-62 53.2%
			4 4:11				
1	7	Player Control Foul on Farmer, Richie					

SECOND HALF SHOT CHART Produced by the K.H.S.A.A. Stat Crew with FINAL III™



Clay County

Player	Player	Player
20 - Jackson, K 1 / 1 100.0%	22 - Farmer, Ru 3 / 5 60.0%	32 - Farmer, Ri 3 / 10 30.0%
10 - Chadwell, 8 / 11 72.7%	30 - Gilbert, A 1 / 2 50.0%	
Layups 1-9 Ft 10-15 Ft Over 15 Ft 3 Pointers Total		
3 / 4 3 / 9 8 / 10 1 / 1 1 / 5 16 / 29		
75.0% 33.3% 80.0% 100.0% 20.0% 55.2%		



Pleasure Ridge Park

Player	Player	Player
33 - Hammonds, 4 / 4 100.0%	24 - Spalding, 1 / 1 100.0%	
34 - Webster, C 3 / 5 60.0%		
15 - Woods, Mar 4 / 11 36.3%		
12 - Penick, An 5 / 10 50.0%		
23 - Ricketts, 1 / 5 16.6%		
Layups 1-9 Ft 10-15 Ft Over 15 Ft 3 Pointers Total		
7 / 9 3 / 8 3 / 8 0 / 3 5 / 9 18 / 37		
77.8% 37.5% 37.5% 0.0% 55.6% 48.6%		

X SCORE: * OFFICIAL FIRST HALF * Date: 03-19-88 Site: State Tourney, Louisville Attendance: 18,636

Team: Pleasure Ridge Park

J.	NAME	TOTAL FG		3-POINT		FT	FTA	REB			PF	TP	A	TO	BLK	S	MIN
		FG	FGA	FG	FGA			O	D	T							
1	Lewis, Kevin	0	0	0	0	0	0	0	0	0	1	0	0	0	0	0	5
3	Hammonds, Sean	2	5	0	0	0	0	2	3	5	0	4	0	1	0	0	16
4	Webster, Chas	4	6	0	0	0	0	3	1	4	1	8	1	0	0	0	15
3	Woods, Mark	5	9	2	4	0	0	0	2	2	1	12	5	4	0	1	16
2	Perick, Andy	3	7	1	2	0	1	1	2	3	1	7	2	1	0	0	12
3	Ricketts, Wayne	4	5	0	0	0	0	0	0	0	0	8	3	0	0	0	8
0	Pfaadt, Shawn	0	1	0	0	0	0	0	0	0	0	0	1	0	0	0	4
0	Spalding, T.	1	1	0	0	0	0	1	1	2	2	2	0	0	0	0	4

TEAM	TOTALS	19	34	3	6	0	1	7	9	16	6	41	12	6	0	1	80
------	--------	----	----	---	---	---	---	---	---	----	---	----	----	---	---	---	----

Percentages:	HALF-----	FG	19/ 34	55.9%	3-PT.	3/ 6	50.0%	FT	0/ 1	0.0%
	Period 1		9/ 15	60.0%		3/ 5	60.0%		0/ 0	0.0%
	Period 2		10/ 19	52.6%		0/ 1	0.0%		0/ 1	0.0%

Team: Clay County

J.	NAME	TOTAL FG		3-POINT		FT	FTA	REB			PF	TP	A	TO	BLK	S	MIN
		FG	FGA	FG	FGA			O	D	T							
0	Jackson, Kevin	3	7	0	0	0	0	4	0	4	2	6	0	2	0	2	16
2	Farmer, Russ	3	10	3	10	1	2	1	2	3	0	10	1	2	0	0	16
0	Rawlings, E.	3	3	0	0	0	0	3	3	6	1	6	0	1	0	0	16
0	Chadwell, Russ	5	6	0	0	2	2	0	1	1	2	12	1	0	0	0	16
2	Farmer, Richie	4	8	1	1	1	1	0	1	1	0	10	5	1	0	0	16

TEAM	TOTALS	18	34	4	11	4	5	8	8	16	5	44	7	6	0	2	80
------	--------	----	----	---	----	---	---	---	---	----	---	----	---	---	---	---	----

Percentages:	HALF-----	FG	18/ 34	52.9%	3-PT.	4/ 11	36.4%	FT	4/ 5	80.0%
	Period 1		11/ 19	57.9%		2/ 5	40.0%		0/ 0	0.0%
	Period 2		7/ 15	46.7%		2/ 6	33.3%		4/ 5	80.0%

Officials: Mike Carter, Rick Chasteen, Alt.-R. Curry

SCORE BY PERIODS

Chronicals: None

Pleasure Ridge Park	21	20	=	41
Clay County	24	20	=	44

Produced by the K.H.S.A.A. Stat Crew with FINAL III™

Pleasure Ridge Park "Panthers" vs Clay County "Tigers"
1st Half Play by Play

PAGE : 2

Tip off at on / / at
Produced by the K.H.S.A.A. Stat Crew with FINAL III™

Player	Team	Clay County	Time	Score	Pleasure Ridge Park	Player	Team
Jackson, Kevin	Farmer, Russ	Rawlings, E., Chadwell, Russ, Farmer, Richie			Lewis, Kevin, Hammonds, Sean, Webster, Chas, Woods, Mark, Penick, Andy		
			2 7:56		Ball to Panthers		
3-5	60.0%	12-20 60.0%	4 ft Lane Turnaround by Farmer, Richie	2 7:28 *25-21	Sub In: Pfaadt, Shawn Out: Penick, Andy		
			2 7:19		Sub In: Ricketts, Wayne Out: Lewis, Kevin		
			2 7:16		Sub In: Spalding, T. Out: Webster, Chas		
			2 7:16		Sub In: Webster, Chas Out: Spalding, T.		
			2 7:16	26-23*	6 ft Lane Jump shot by Webster, Chas	2-3	66.6% 10-18 55.5%
					Assist by Woods, Mark	2	7
			2 6:20	26-25*	17 ft Circle Jump shot by Ricketts, Wayne	3-4	75.0% 11-20 55.0%
					Assist by Pfaadt, Shawn	1	8
2-6	33.3%	13-22 59.0%	3 pt 21 ft Right Angle Jump shot by Farmer, Russ	2 5:48 *29-25			
3		5	Assist by Farmer, Richie				
				2 5:35	29-27* 6 ft Lane Bank by Webster, Chas	3-4	75.0% 12-21 57.1%
					Assist by Woods, Mark	3	9
				2 5:28	Sub In: Penick, Andy Out: Pfaadt, Shawn		
				2 5:28			
			REB: 12 A: 5 BLK: 0 TO: 5 PF: 1		REB: 6 A: 9 BLK: 0 TO: 4 PF: 2		
			S: 2 FT: 0-0 00.0% FG: 13-22 59.0%	No. 1 Clay County	T I M E - O U T	S: 0 FT: 0-0 00.0% FG: 12-21 57.1%	
				2 5:28	Sub In: Spalding, T. Out: Ricketts, Wayne		
1	2	Foul on Rawlings, E.		2 5:14			
4-5	80.0%	14-25 56.0%	6 ft Left Base Line Driving by Chadwell, Russ	2 4:45 29-29*	16 ft Circle Jump shot by Penick, Andy	3-6	50.0% 13-23 56.5%
4		6	Assist by Farmer, Richie	2 4:31 *31-29			
5-6	83.3%	15-26 57.6%	4 ft Lane Jump shot by Chadwell, Russ	2 4:21 31-31*	Follow Tip by Webster, Chas	4-5	80.0% 14-25 56.0%
5		7	Assist by Farmer, Richie	2 4:07 *33-31			
1	3	Foul on Chadwell, Russ		2 3:49			
				2 3:41	Foul on Spalding, T.	1	3
3-8	37.5%	16-29 55.1%	3 pt 22 ft Right Base Line Jump shot by Farmer, Russ	2 3:19 33-33*	14 ft Left Base Line Jump shot by Hammonds, Sean	1-2	50.0% 15-27 55.5%
				2 3:04 *36-33			
				2 2:48 36-35*	12 ft Lane Jump shot by Spalding, T.	1-1	100% 16-28 57.1%
					Assist by Woods, Mark	4	10
4-8	50.0%	17-30 56.6%	9 ft Lane Turnaround by Farmer, Richie	2 2:33 *38-35			
				2 2:32	Foul on Spalding, T.	2	4
				2 2:32	Sub In: Ricketts, Wayne Out: Spalding, T.		
1-1	100%	1-1 100%	Farmer, Richie, 1 Free Throw made	2 2:32 *39-35			
				2 2:13	Foul on Penick, Andy	1	5
1-2	50.0%	2-3 66.6%	Farmer, Russ, 1 & Bonus made 1st missed 2nd	2 2:13 *40-35			
2		4	Foul on Jackson, Kevin	2 2:12			
				2 2:02 40-37*	10 ft Left Angle Jump shot by Hammonds, Sean	2-3	66.6% 17-29 58.6%
					Assist by Ricketts, Wayne	3	11
				2 1:40 40-39*	4 ft Lane Jump shot by Woods, Mark	5-8	62.5% 18-30 60.0%
3-7	42.8%	18-33 54.5%	6 ft Lane Jump shot by Jackson, Kevin	2 1:31 *42-39			
2		5	Foul on Chadwell, Russ	2 1:07			
				2 1:07	Penick, Andy, 1 & Bonus missed 1st	0-1	00.0% 0-1 00.0%
				2 0:58	Foul on Woods, Mark	1	6
2-2	100%	4-5 80.0%	Chadwell, Russ, 1 & Bonus made both	2 0:58 *44-39			
				2 0:43 44-41*	16 ft Circle Jump shot by Ricketts, Wayne	4-5	80.0% 19-33 57.5%
					Assist by Woods, Mark	5	12

